

# DT50 SPYDER



## STANDARD FEATURES

High Torque Drive system  
Extreme Gradeability - market leading  
Rear Oriented Boom position  
Auto Levelling Basket  
Maximum Approach Angle - market leading  
OSHA and ANSI 92.20 Standards certified  
Power Source - Gasoline Engine  
High Pressure Water/Air connection to Basket  
110V Power Supply to the Basket  
Automatic Stabilization  
Negative Working Height - market leading  
Remote Management and Diagnostic software  
Radio Control  
Up & Over - market leading  
Invisible Boom

## ADDITIONAL/OPTIONAL FEATURES

Non-marking Tracks  
Brushes for Boom Protection  
Optional 1 Man Basket

Custom Paint Options available (Upper and Lower sections)  
Auto-close Functionality  
Extra Large Basket



## TECHNICAL SPECIFICATIONS

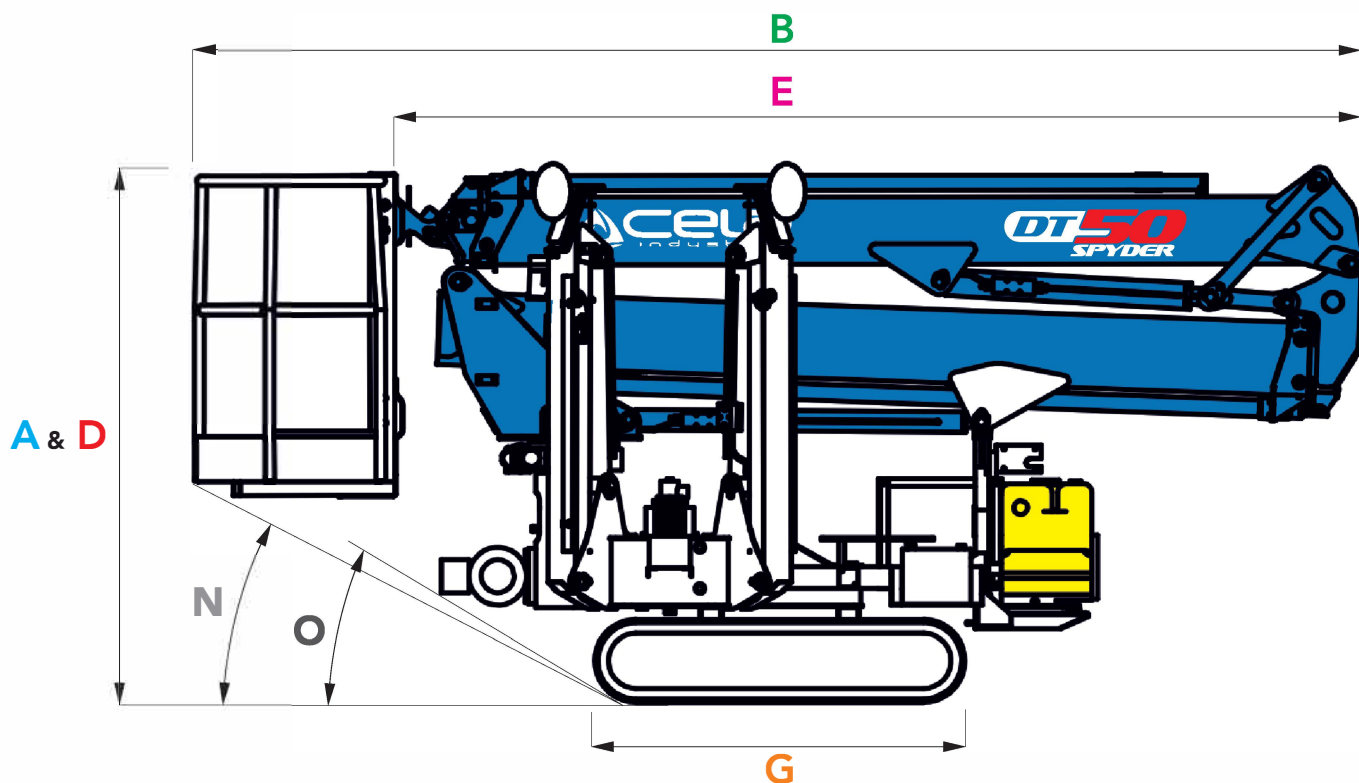
### MEASUREMENTS

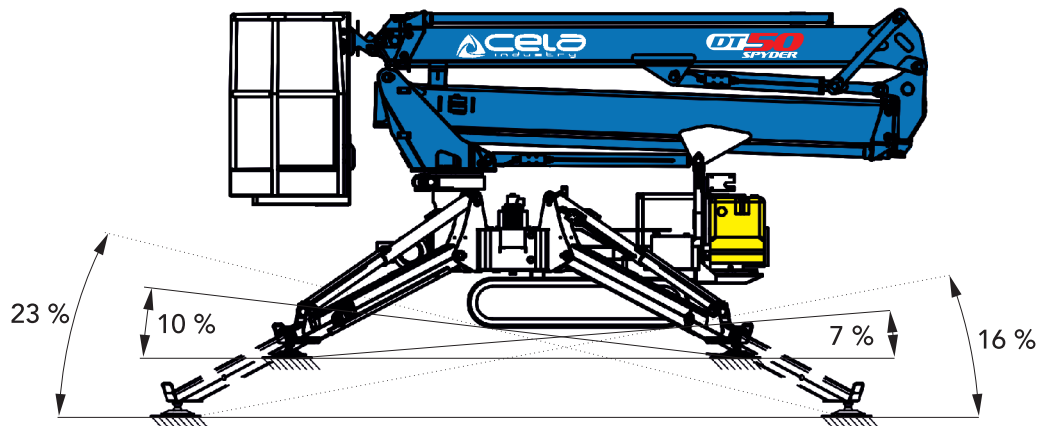
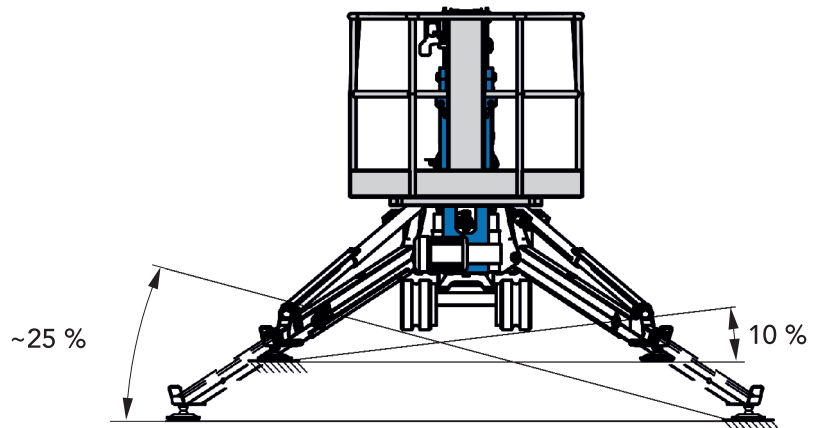
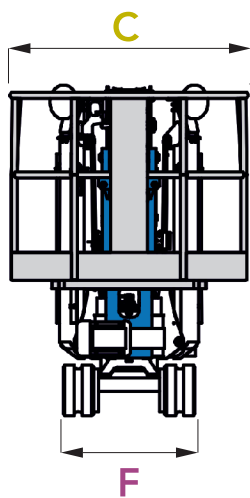
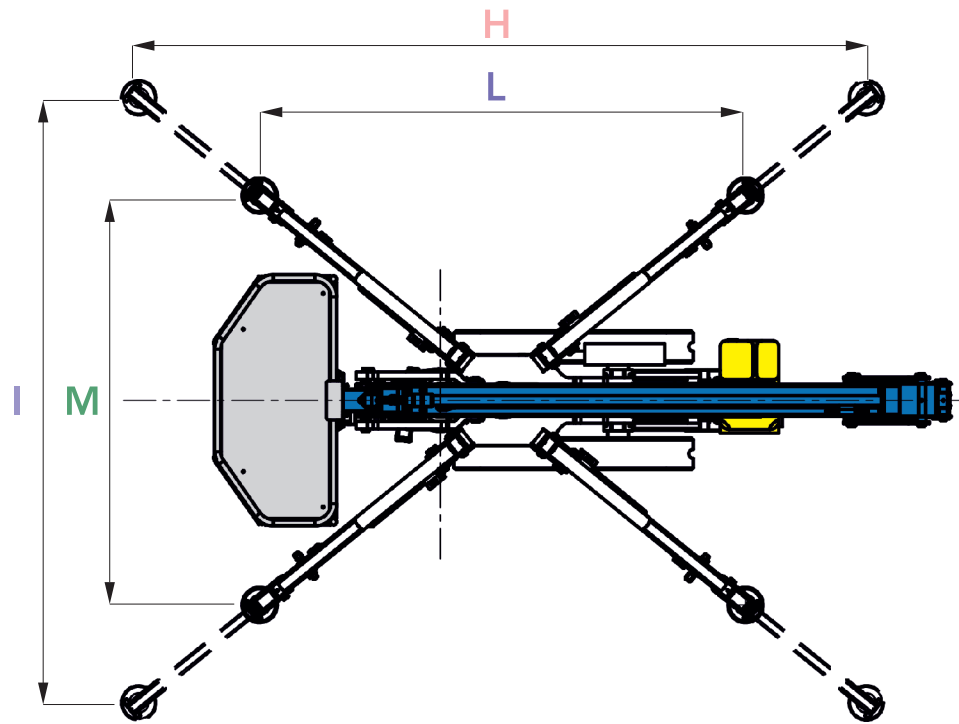
<b>A</b>	Height stowed with basket	6' 5"
<b>B</b>	Overall Length with basket	13' 11"
<b>C</b>	Overall Width with basket	4' 7"
<b>D</b>	Height stowed without basket	6' 5"
<b>E</b>	Overall Length without basket	11' 10"
<b>F</b>	Overall Width without basket	2' 7"
<b>G</b>	Track L x W	4' 5" x 2' 7"
<b>H</b>	Length outrigger footprint. Standard	13' 5"
<b>I</b>	Width outrigger footprint. Standard	11' 2"
<b>L</b>	Length outrigger footprint. One side narrow	9'
<b>M</b>	Width outrigger footprint. One side narrow	7' 7"

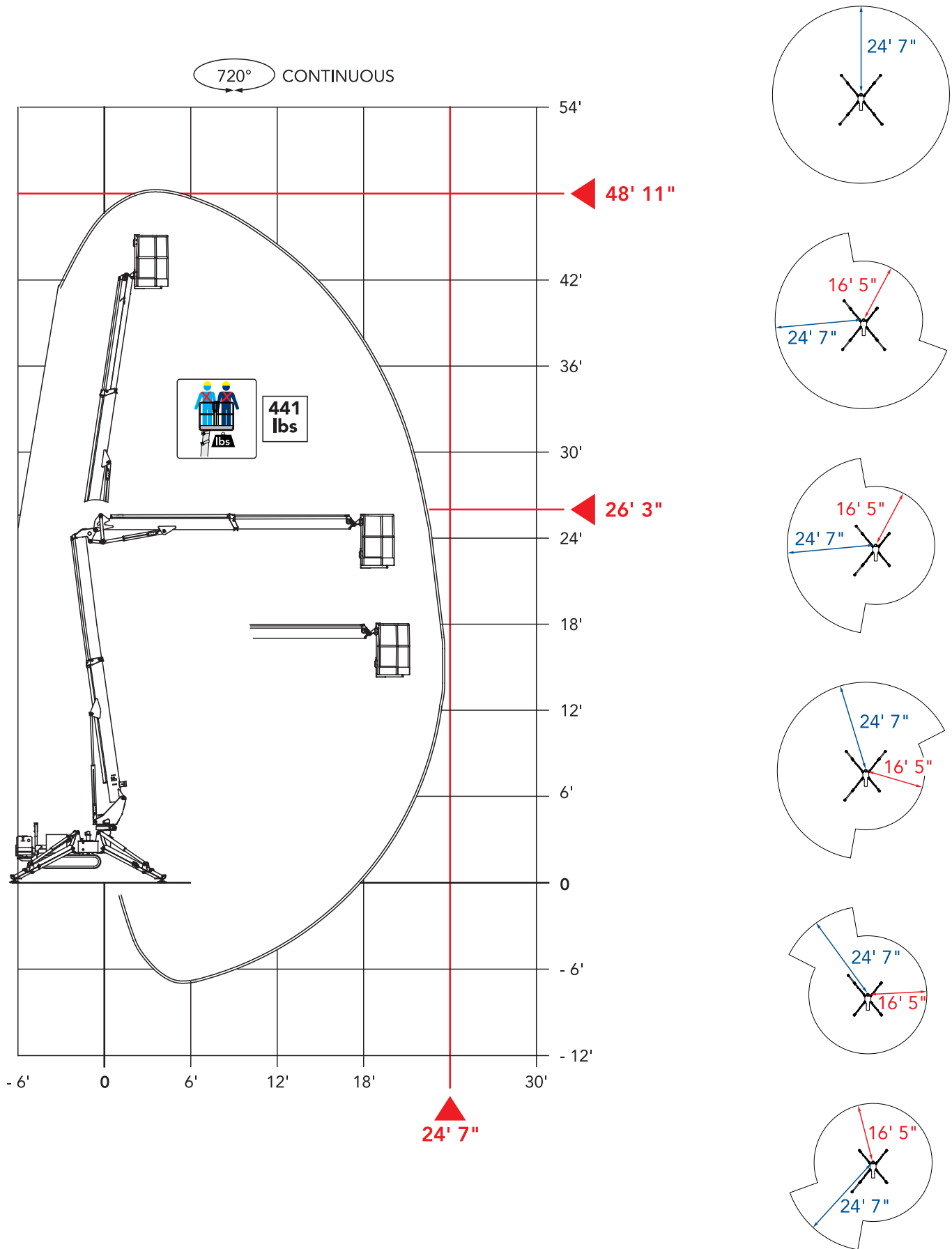
### PERFORMANCE

	Platform working height (max)	48' 11"
	Horizontal outreach (max)	24' 7"
	Up & over clearance	26' 3"
	Basket Capacity	441 lbs
	Basket rotation	180°
	Turret rotation	720°
	Gradeability (max)	60 %
<b>N</b>	Angle of Approach (max with Basket)	51 %
<b>O</b>	Angle of Approach (max without Basket)	60 %
	Max Slope Angle for Stabilization	23 %
	Power source	Gasoline

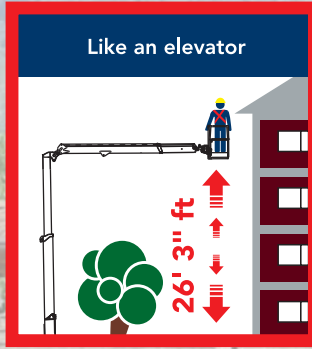
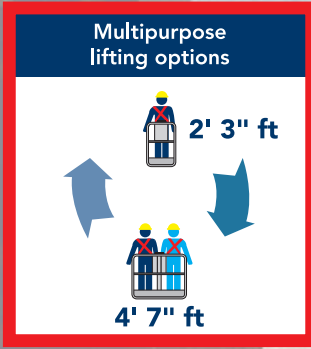
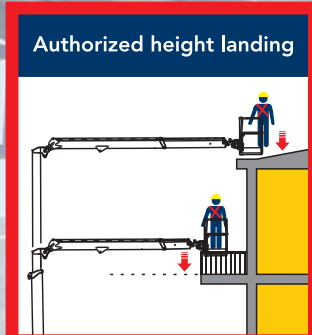
Total weight 3527 lbs







AUTHORIZED HEIGHT LANDING



219 East Madison Street  
Dublin, Georgia 31021  
Local - 678-302-0382  
Toll Free - 877-611-0380  
sales@tristaraerial.com  
www.TriStarAerial.com